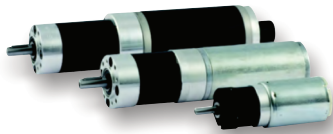


Motor Type:	Motor Power continuous [Watts]:	Torque continuous [Nm]:	Motor Diameter [mm]:	Shaft Diameter [mm]:	Encoder Available:	Brake Available:	Mass [kg]:	Protection:	Rated Speed [rpm]:	Gearbox Types:	Preferred Voltage [Volts dc]:
CI-0229	20	0.06	42	6	C	-	0.4	IP-20	2850	P	12
CI-0330	35	0.11	52	7	C	-	0.8		P, W		
CI-0530	50	0.16	65	7	C, E	-	1.2		P, W		
CI-0730	70	0.22	65	9	-	-	1.7		P, W, IH, BH, PH		
CI-1030	100	0.31	81	9 or 11	C, E	-	2.7	IP-40, IP-65	3000	P, W, IH, BH, PH	24
CI-1830	180	0.57	81	9 or 11	C, E	-	3.4		P, W, IH, BH, PH		
CI-2530	250	0.80	104	11	-	-	4.2		P, W, IH, BH, PH		
CI-3530	350	1.12	110	11 or 14	-	Y	5.3		P, W, IH, BH, PH		
CI-6030	600	1.91	110	14	-	Y	7.1	IP-40, IP-65	P, W, IH, BH, PH		

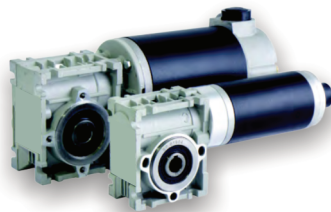
Gearboxes: P = Planetary, W = Worm, IH = Inline Helical, BH = Bevel Helical, PH = Parallel Helical

Encoders: C = Compact CE22, E = Eltra EL30

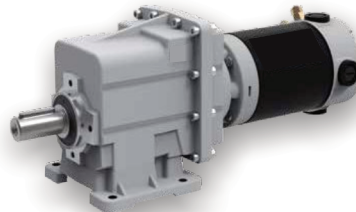
**Gearbox Types:**



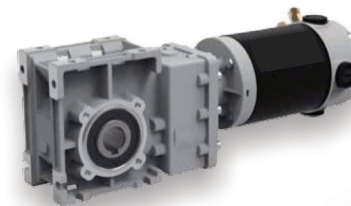
Planetary:



Worm:



Inline Helical:



Bevel Helical:



Parallel Helical: