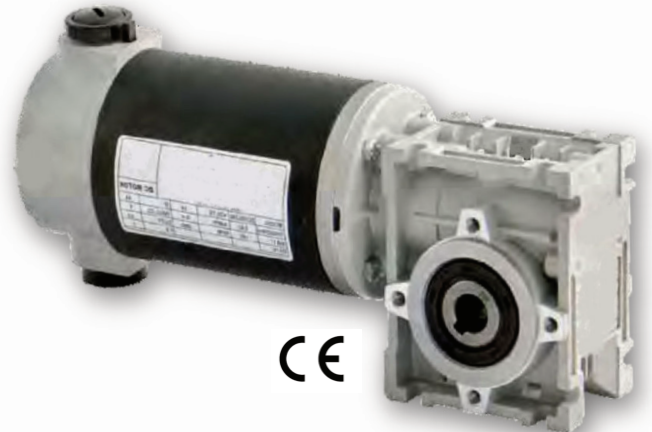


# DC Worm Geared Motor

# CWC-030

# 100-180W

- Rated output speeds from 30 to 600 rpm.
- Output torque up to 12.8 Nm.
- High load capability on output shaft.
- All metal gears for long service life.
- Ball Bearings on output shaft.
- 2 motor sizes available, CI-1030 and CI-1830.
- 24V DC brushed motor standard, 12V available.
- Hollow or solid output shafts available.
- Encoder option available on both motors.
- Gearbox ratios available from 5:1 up to 100:1.



The **CWC-030** is the third smallest in the Worm Gearbox range available from Cobalt Controls Ltd. It is offered with a choice of two DC Motors, CI-1030 or CI-1830, both rated at 24 or 12 Volts DC.

The standard output is a 14mm diameter hollow shaft but single or double sided solid shafts are also available. The die cast aluminium gearbox housing has been designed for flexibility with numerous positions for mounting bolts.

All gearboxes are pre-filled with synthetic oil, are

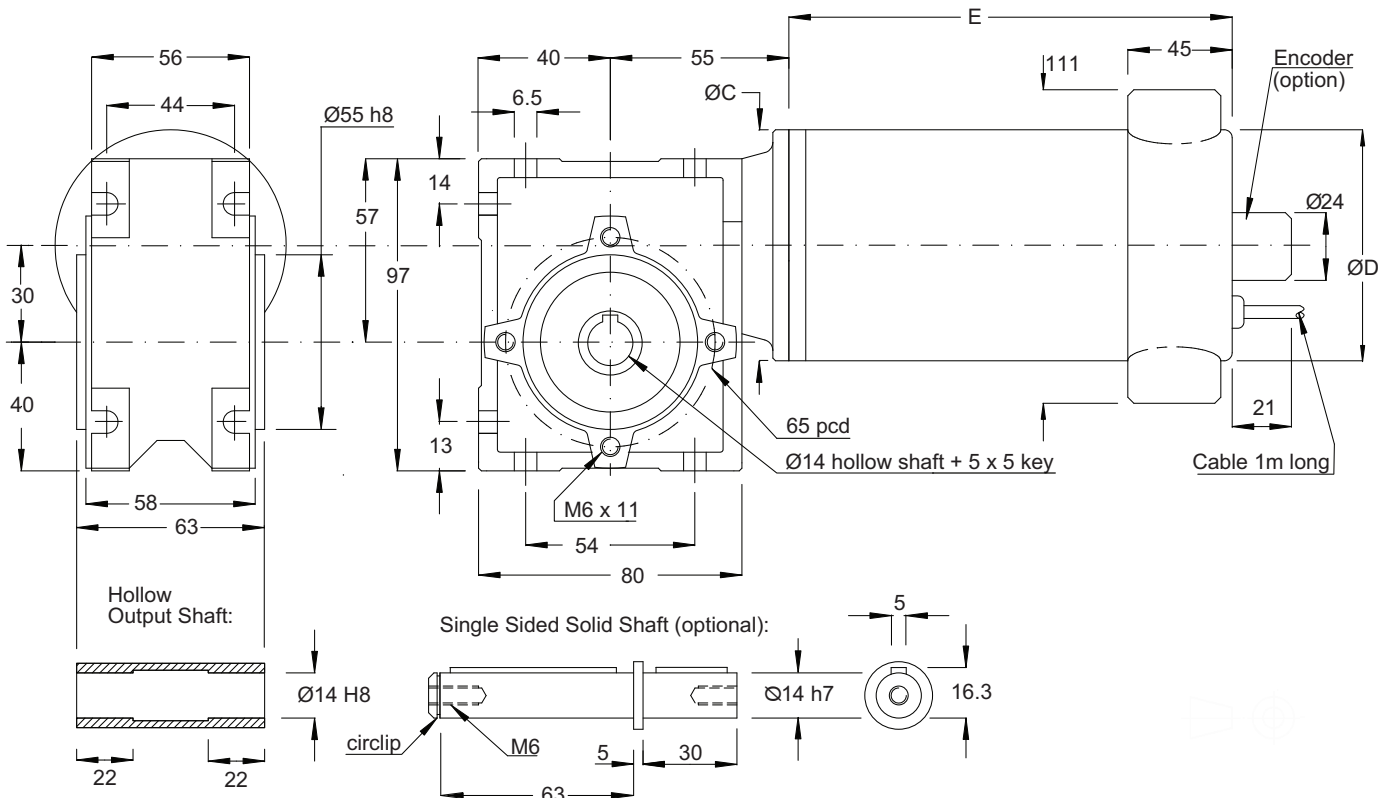
maintenance free and can be mounted in any position.

Motors are Low Voltage DC Brushed Permanent Magnet and offer high starting torque. Shafts are supported on Ball Bearings and Totally Enclosed construction is used.

Worm gearboxes are normally the most economically priced of all gearbox types and are mechanically robust.

This geared motor must not be used where failure or malfunction of the product could lead to injury or loss of human life.

### Dimensions (mm):



## CWC-030

CWC030 Geared Motor Data:											
Rated Values (S2 - Intermittent Operation):							Motor Dimensions:				
Motor:	Output Speed (rpm):	Output Torque (Nm):	Peak Torque (Nm):	Gearbox Ratio:	Motor Current (A):	S2 Full Load Time (minutes):	Size:	Body Length E (mm):	Body Diameter D (mm):	Flange Diameter C (mm):	Mass (kg):
CI-1030	600	1.98	29.0	5:1	8.4 (24V) 16.8 (12V)	25	A	157	81	81	3.9
	400	2.94		7.5:1							
	300	3.83		10:1							
	200	5.62		15:1							
	150	7.22		20:1							
	120	8.69		25:1							
	100	9.89		30:1							
	75	12.06		40:1							
	60	11.14		50:1							
	50	11.21		60:1							
	37.5	11.16		80:1							
30	10.40	100:1									
CI-1830	600	3.54	29.0	5:1	15.0 (24V) 30.0 (12V)	25	B	189	81	81	4.6
	400	5.25		7.5:1							
	300	6.84		10:1							
	200	10.03		15:1							
	150	12.75		20:1							
	120	12.76		25:1							
	100	11.67		30:1							
	75	12.06		40:1							
	60	11.14		50:1							
	50	11.21		60:1							
	37.5	11.16		80:1							
30	10.40	100:1									

CWC-030 Geared Motor General Specification:	
Rated motor voltage:	24 Vdc standard, 12 Vdc available.
Output shaft radial load:	600N maximum.
Output shaft axial load:	120N maximum.
Operation at Rated Load (S2 Duty):	Can be operated at Rated Load for up to S2 Full Load Time followed by a cool down period.
Continuous operation (S1 Duty):	Continuous torque = Rated Torque x 0.7 - Cooling required.
Protection:	IP-40.
Gearbox efficiency:	0.88 at 600rpm, 0.52 at 30rpm (when fully run-in).
Encoder:	CE22 or EH30. (See encoder data sheets for details).
Gearbox Temperature:	50°C max continuous.

Part Numbers:	
CWC-030-xxxss-Clyyyy-zz+e	xxx = output speed, ss = output shaft: 1S = single sided solid, 2S = double sided solid or H = hollow shaft. yyyy = motor size, zz = motor voltage and e = encoder part number if required.
Example: CWC-030-2002S-CI-1030-24+CE22	CWC-030 worm geared motor, 200rpm, double sided solid output shaft, CI-1030 24Vdc motor plus CE22 encoder.